

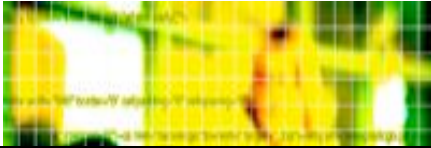


大连艾科科技开发有限公司 公司简介

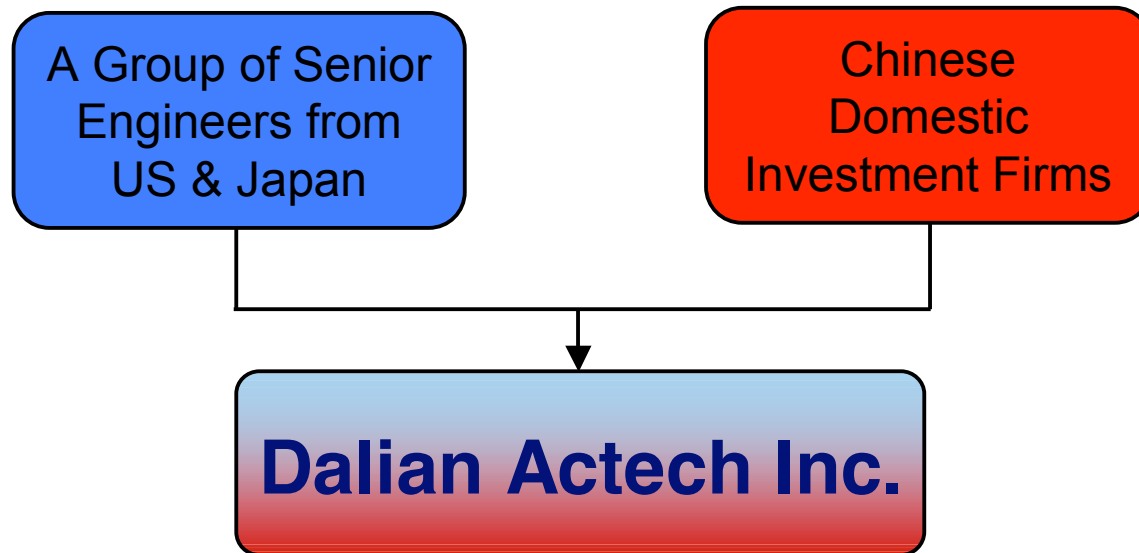
# Dalian Actech Corporate Profile

May 2009

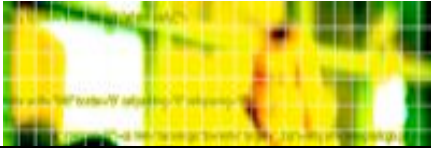
*Actech Confidential*



# Company Origin



Initial Registered Capital : RMB100M (\$15M)  
Increased to RMB125M (\$18M) in 2008



# Headquarter & Branches

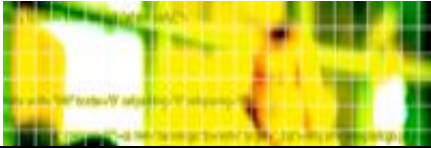
## Dalian Headquarter

Northeast Microwave Phonics  
Engineering Center (Shenyang)

Xi'an Microwave Technology  
R&D Center

Beijing Photonics R&D Center

Yixin Ceramics Packaging  
Plant



# History & Milestones

**March 2003 Registered in Dalian, China**

**March 2004 Plant Construction Start**

**May 2005 Operation Start**

**May 2006 New Plant Complete (Office and R&D Space 15K SQM, Clean Room 4K SQM)**

**Dec 2006 Developed High Precise YAG Welding Station for 10G EML**

**Sept 2007 10G EML Production Start**

**April 2008 10G MSA Receiver Developed**

**May 2008 10G TOSA/ROSA Project Start**

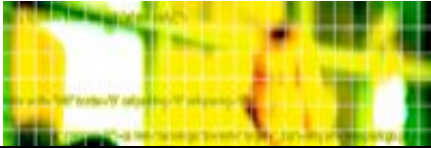
**June 2008 ISO9001 Qualified**

**Sept 2008 ISO14001 and OHSAS18001 Qualified**

**Dec 2008 Qualified ZTE Supplier**

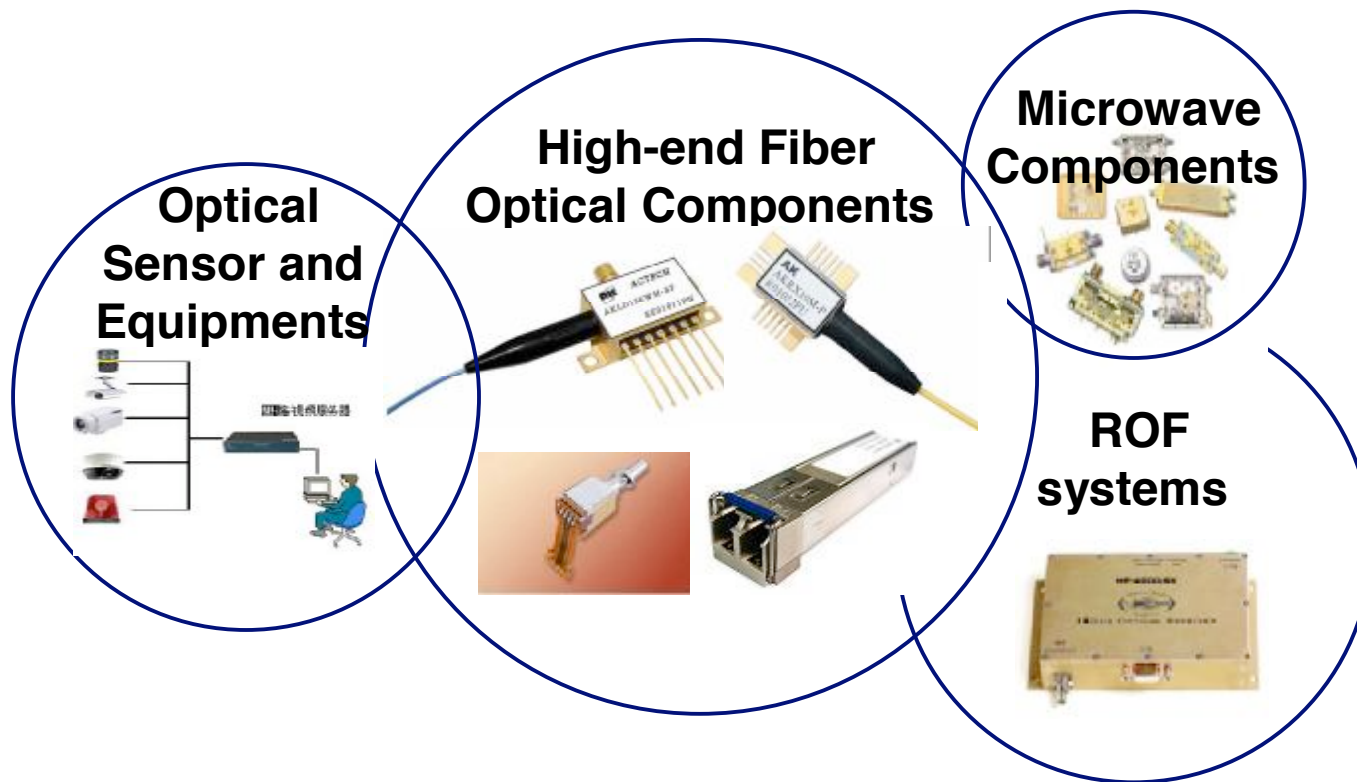
**Jan 2009 Transceiver and Optical Sensor Developed**

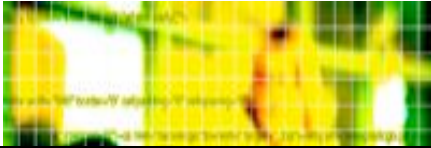




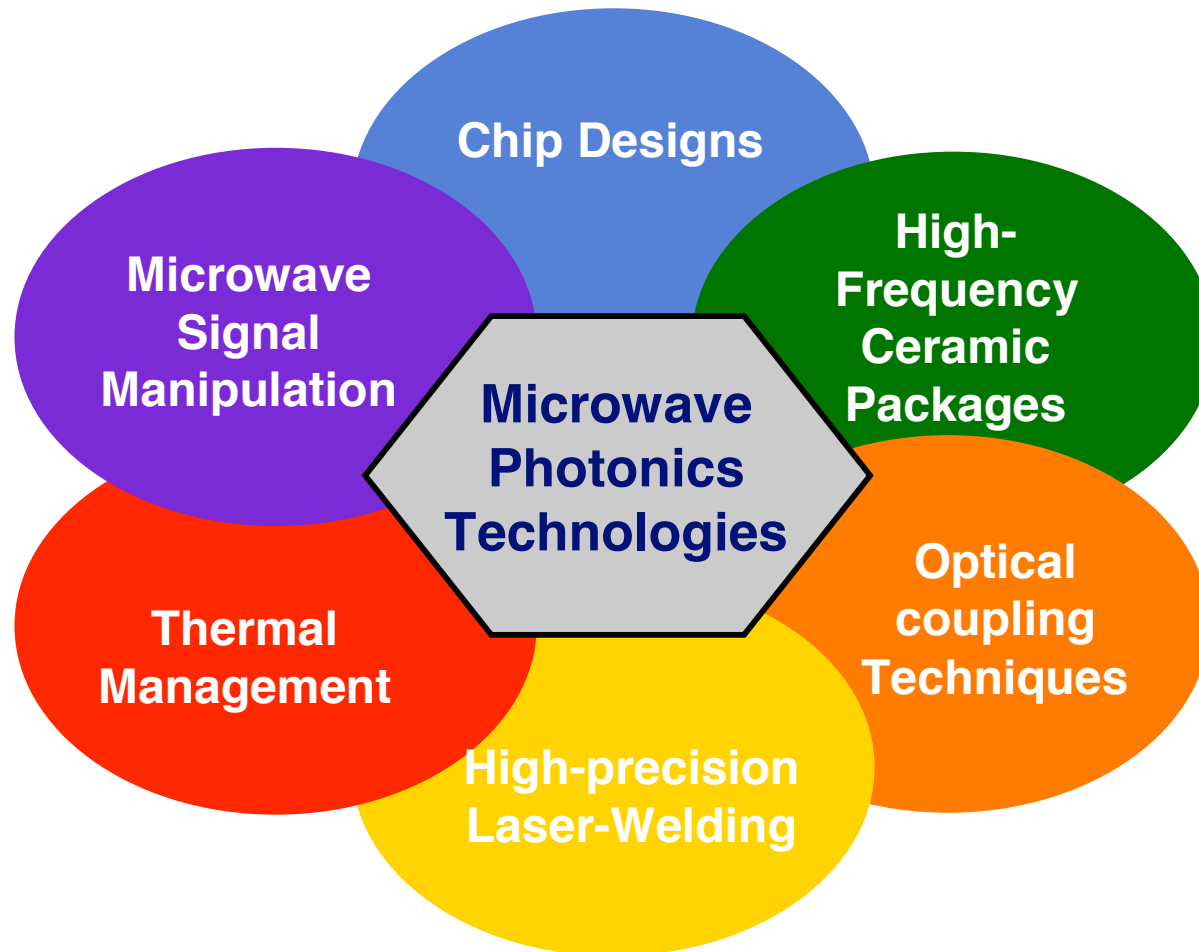
# Product Portfolio

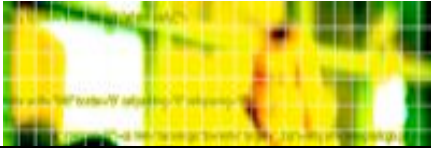
**We are focusing on high-end optical and microwave components and subsystems**





# Key Technologies and Know-How



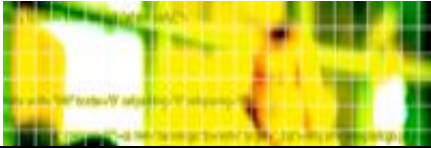


## **Experienced Management, R&D Team and Skilled Workers**

**Key management team and technical team members all hold advanced degrees, have average 20 years industrial and academic experiences**

**60% of total employees are college graduate**

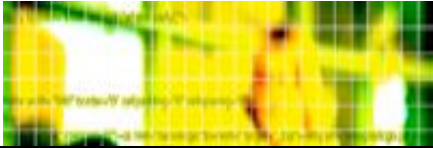
**Production line workers all are educated in middle-level technical schools**



# Top Class Manufacturing Plant in China

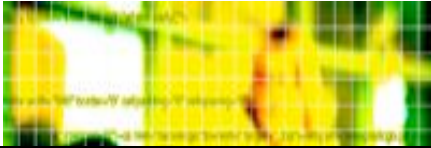






# Production Line

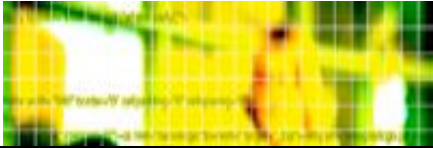




# Production Line



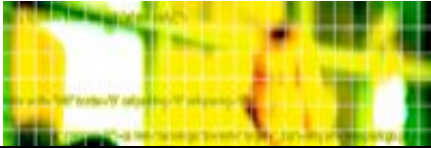




# Production Line







# Industrial Stand. Equip.

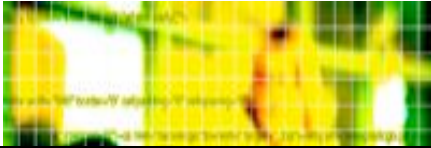
Agilent, Anritsu, etc.

Newport, etc.

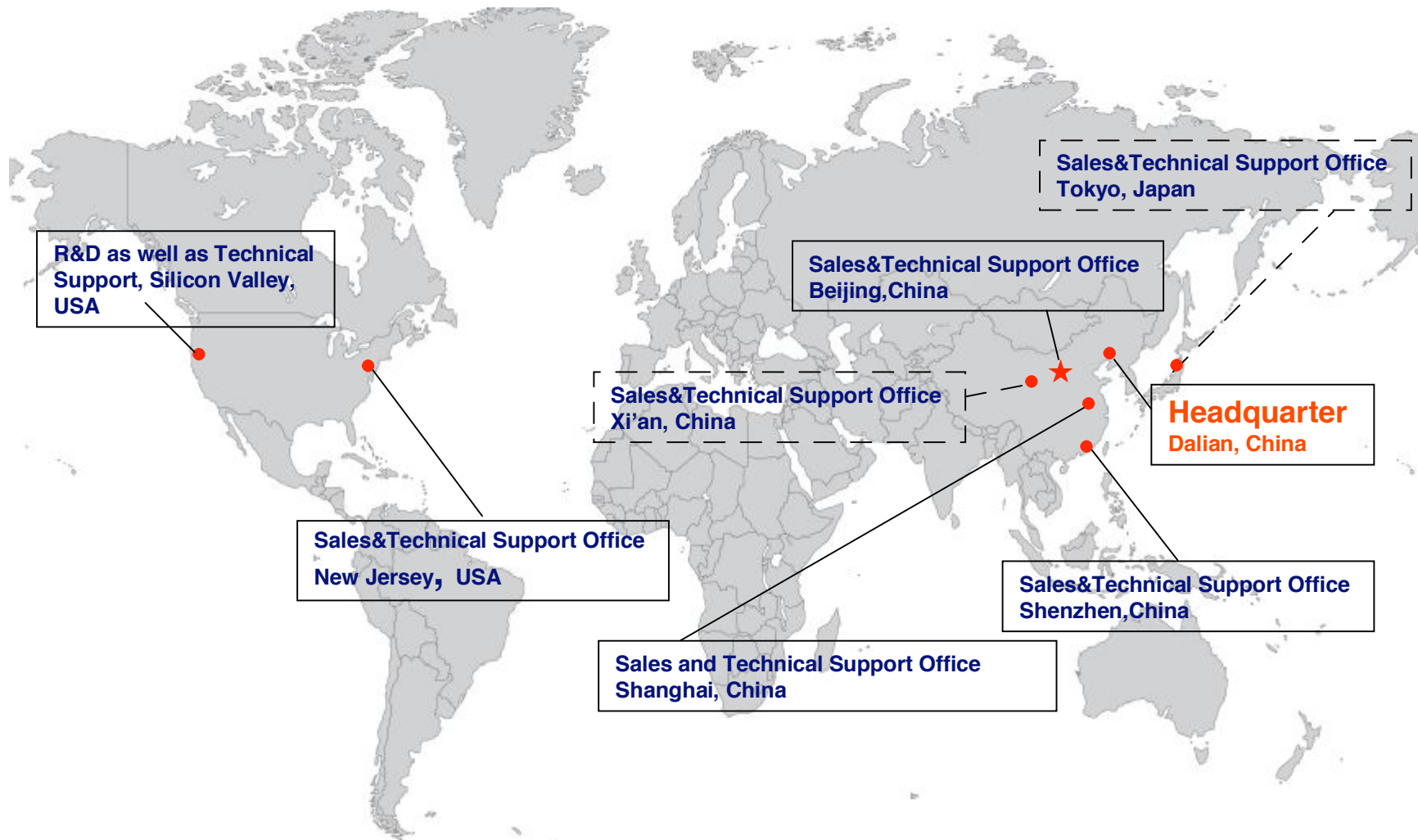
K&S, Royce, etc.

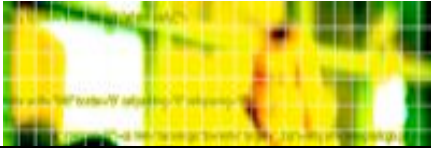
Lasag, Miyachi, etc





# Worldwide Technical Support





# R&D Efforts

**Engineering Center for Manufacturing Technologies**

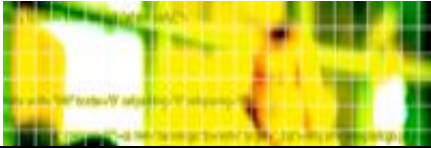
**(Headquarter )**

**Microwave Photonics Engineering Centers (Dalian)**

**National Post Doctorial R&D Base (Dalian)**

**R&D Cooperation with Prestigious Institutes**

(Institute of Semiconductors (Beijing); Tsinghua University;  
Shanghai Jiaotong University (Shanghai); Touhoku  
University (Japan); Hokkaido University (Japan);....



# Our Goals

**First Class High-End Optical Component  
Supplier both Domestically and Internationally  
High-End Microwave Components Supplier  
National R&D Base in Microwave Photonics  
Reliable, All-Weather Components Partner for  
Customers**